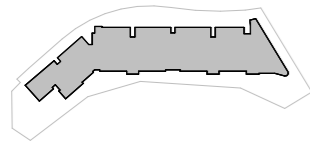
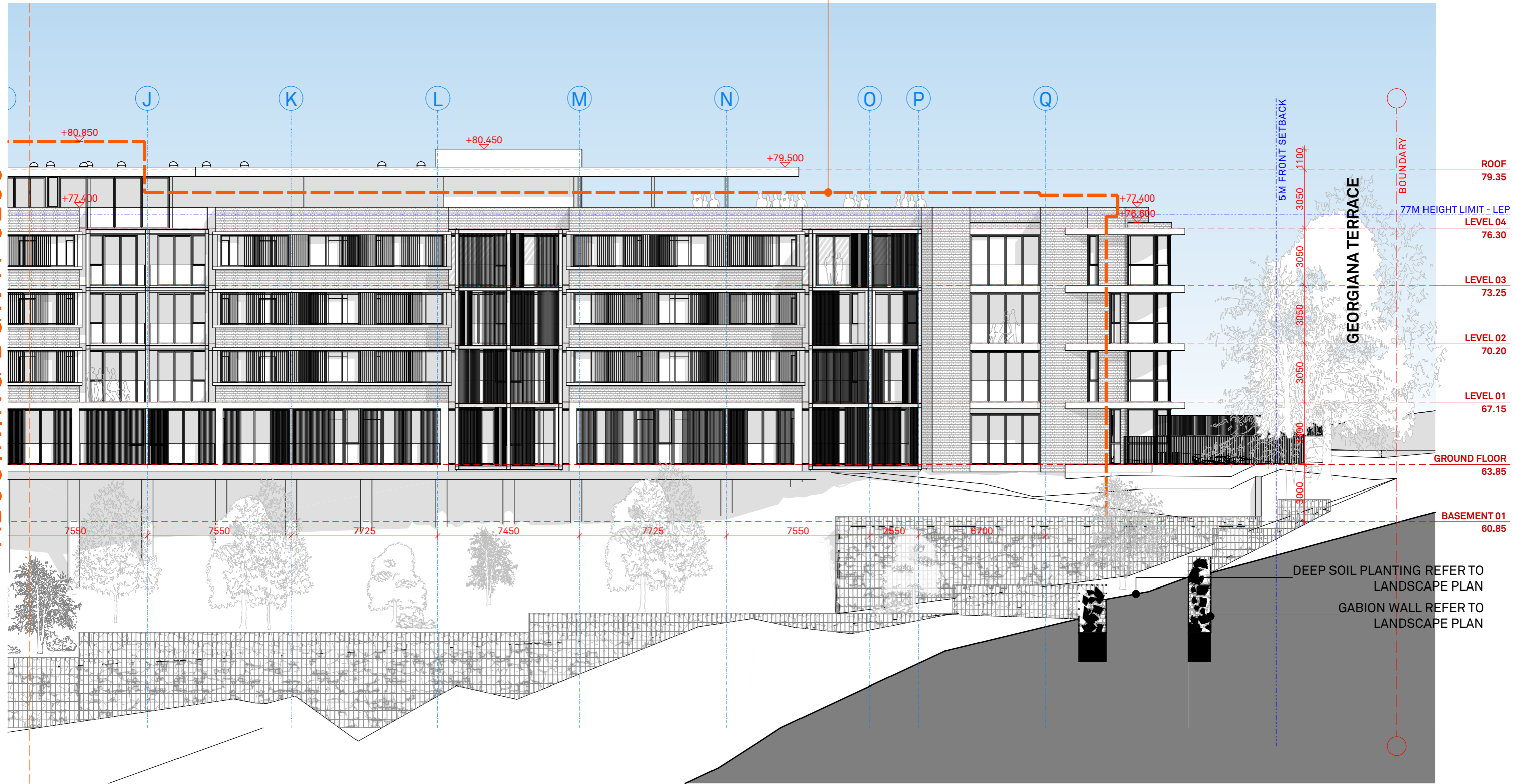


OUTLINE OF APPROVED DA

ADJOINING DGW A-0205



EAST

— — — — — OUTLINE APPROVED DA
 - - - - - OUTLINE PROPOSAL

MARQUE

NOTES
 This drawing is issued upon the condition it is not copied, reproduced, retained or disclosed to any unauthorised person either wholly or in part without prior consent in writing of Benson McCormack Architects.
 DO NOT SCALE DRAWINGS.

REV	DATE	ISSUE
A	MAR 18	S4.55(2) ISSUE 01

CLIENT
 Emirates Holdings Australia Pty Ltd
 54-58 Stoney Creek Road
 Bextley NSW 2207

PROJECT DETAILS
 70 JOHN WHITEWAY DR.
 70 WHITEWAY DRIVE
 GOSFORD NSW 2250

PROJECT NORTH

SCALE
 1:200 @ A3

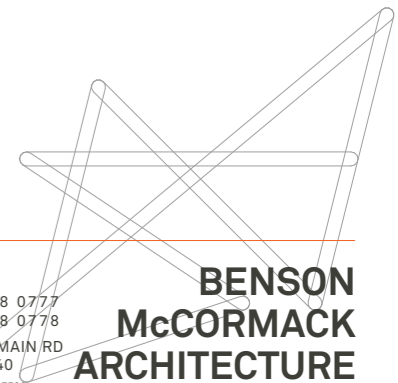
PROJECT NO.
 1767A

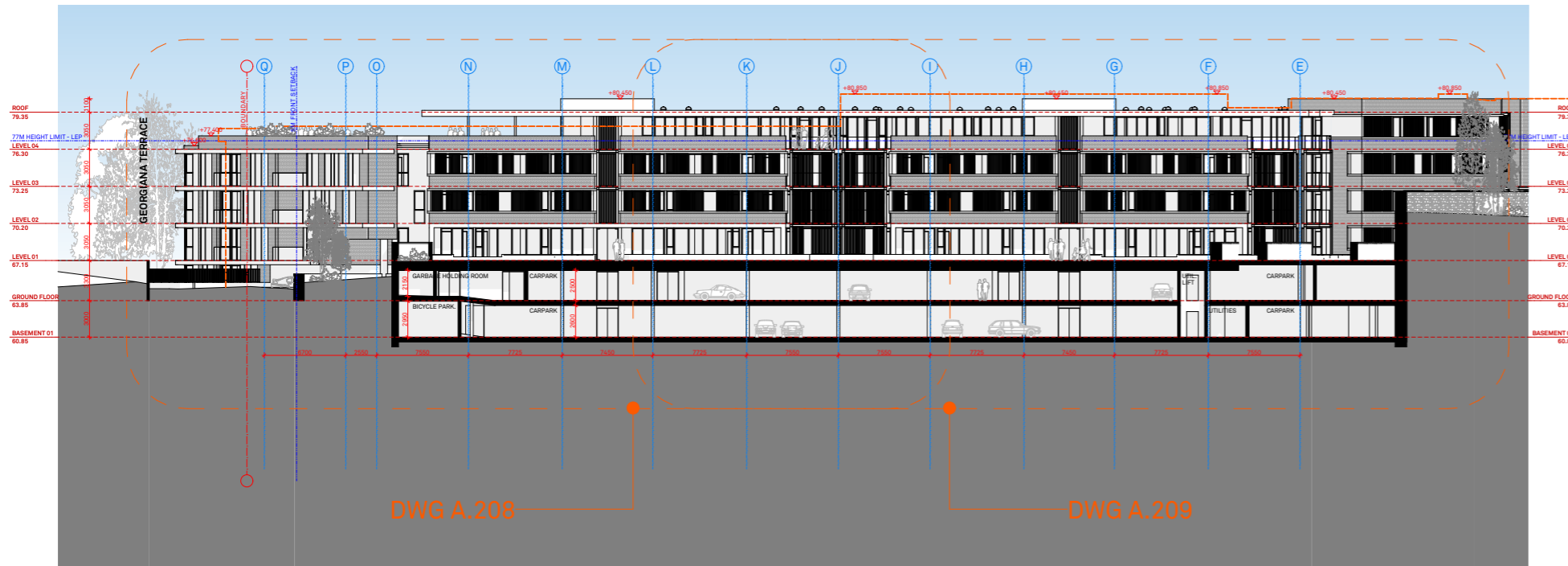
DRAWING NO.
 A-0206

DRAWING
 ELEVATION EAST 2/2

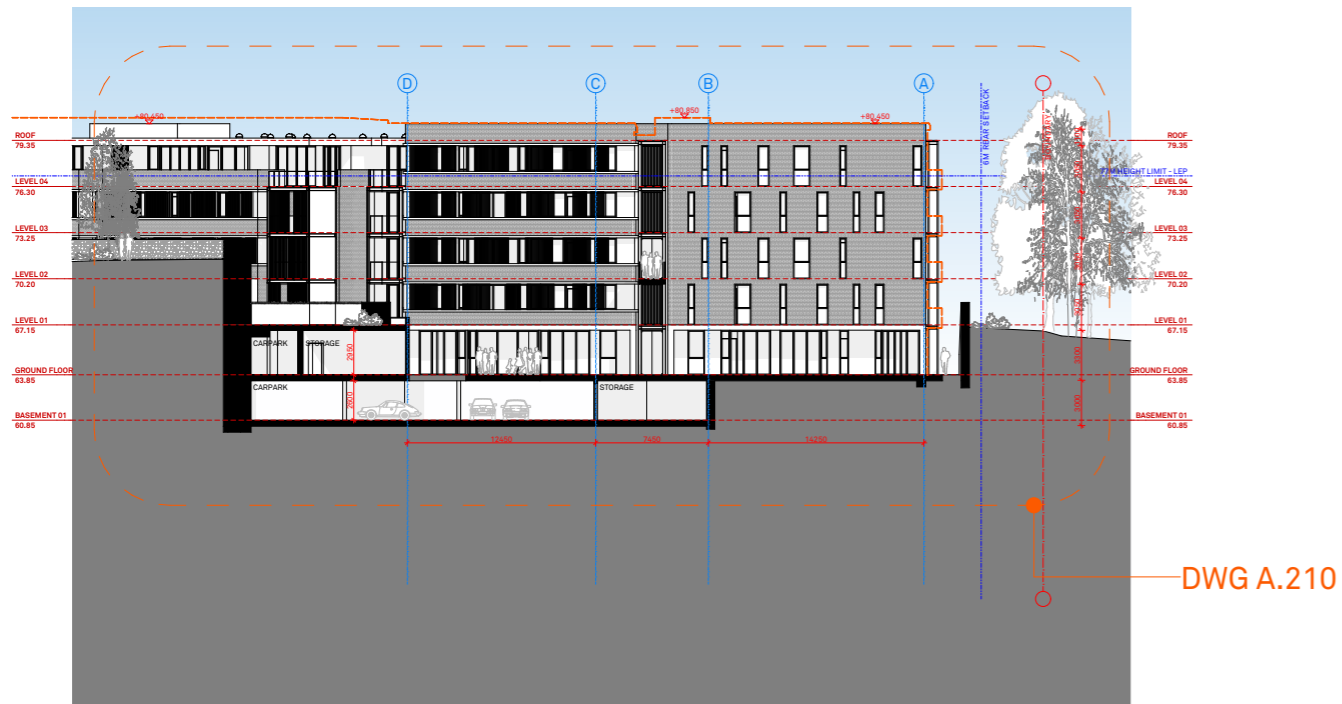
ISSUE
 A

ARCHITECT
 P : + 61 2 9818 0777
 F : + 61 2 9818 0778
 STUDIO 5, 505 BALMAIN RD
 LILYFIELD NSW 2040
 ABN: 76 129 130 285 RN: 7536

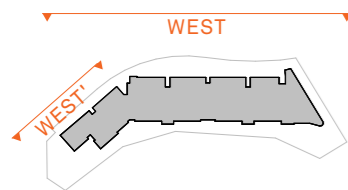




ELEVATION WEST



ELEVATION WEST'



— — — — — OUTLINE APPROVED DA
 — — — — — OUTLINE PROPOSAL

MARQUE

NOTES
 This drawing is issued upon the condition it is not copied, reproduced, retained or disclosed to any unauthorised person either wholly or in part without prior consent in writing of Benson McCormack Architects.
 DO NOT SCALE DRAWINGS.

REV	DATE	ISSUE
A	MAR 18	S4.55(2) ISSUE 01

CLIENT
 Emirates Holdings Australia Pty Ltd
 54-58 Stoney Creek Road
 Bextley NSW 2207

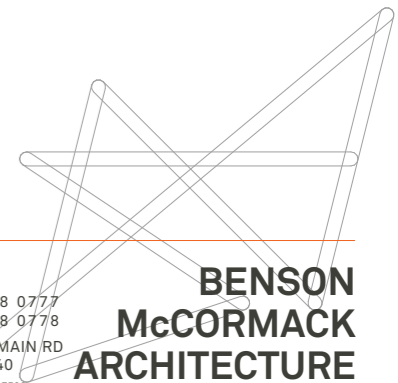
PROJECT DETAILS
 70 JOHN WHITEWAY DR.
 70 WHITEWAY DRIVE
 GOSFORD NSW 2250



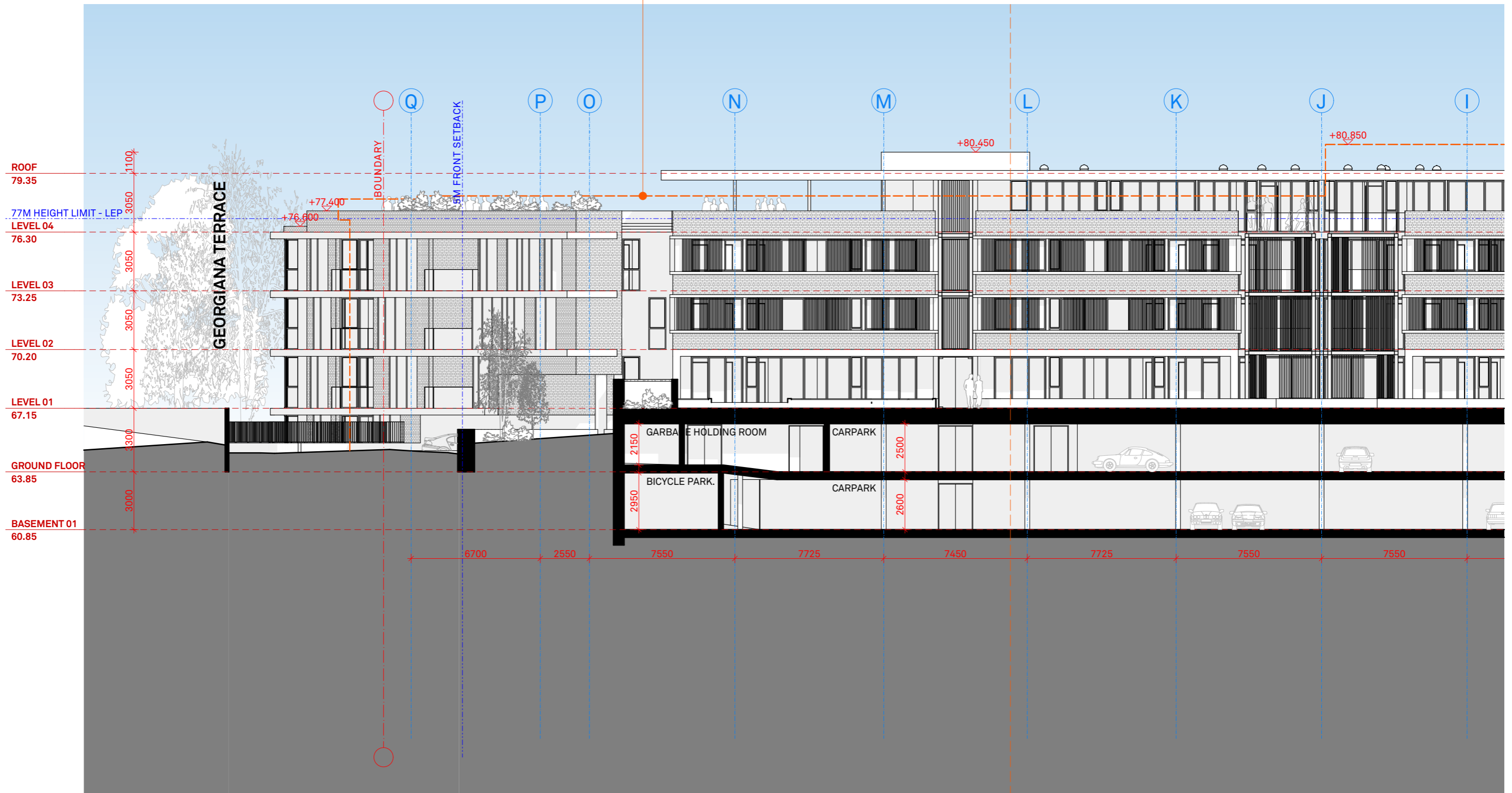
SCALE 1:500 @ A3
PROJECT NO. 1767A
DRAWING NO. A-0207
DRAWING ELEVATIONS WEST

ISSUE
 A

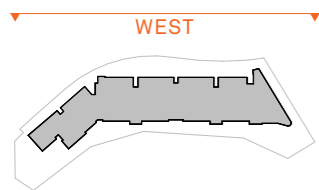
ARCHITECT
 P : + 61 2 9818 0777
 F : + 61 2 9818 0778
 STUDIO 5, 505 BALMAIN RD
 LILYFIELD NSW 2040
 ABN: 76 129 130 285 RN: 7536



OUTLINE OF APPROVED DA



ADJOINING DGW A-0209



— — — — — OUTLINE APPROVED DA
 - - - - - OUTLINE PROPOSAL

MARQUE

NOTES
 This drawing is issued upon the condition it is not copied, reproduced, retained or disclosed to any unauthorised person either wholly or in part without prior consent in writing of Benson McCormack Architects.
DO NOT SCALE DRAWINGS.

REV	DATE	ISSUE
A	MAR 18	S4.55(2) ISSUE 01

CLIENT
 Emirates Holdings Australia Pty Ltd
 54-58 Stoney Creek Road
 Bextley NSW 2207

PROJECT DETAILS
 70 JOHN WHITEWAY DR.
 70 WHITEWAY DRIVE
 GOSFORD NSW 2250

PROJECT NORTH

SCALE
 1:200 @ A3

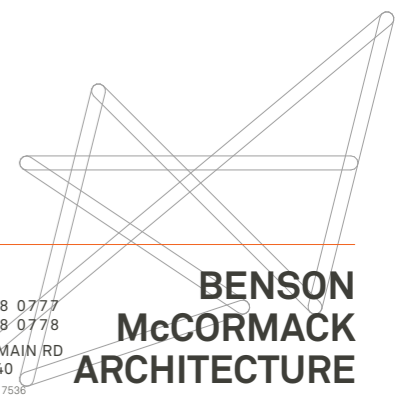
PROJECT NO.
 1767A

DRAWING NO.
 A-0208

DRAWING
 ELEVATION WEST 1/2

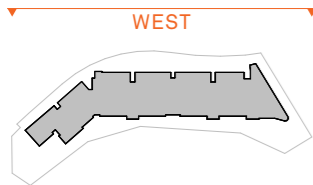
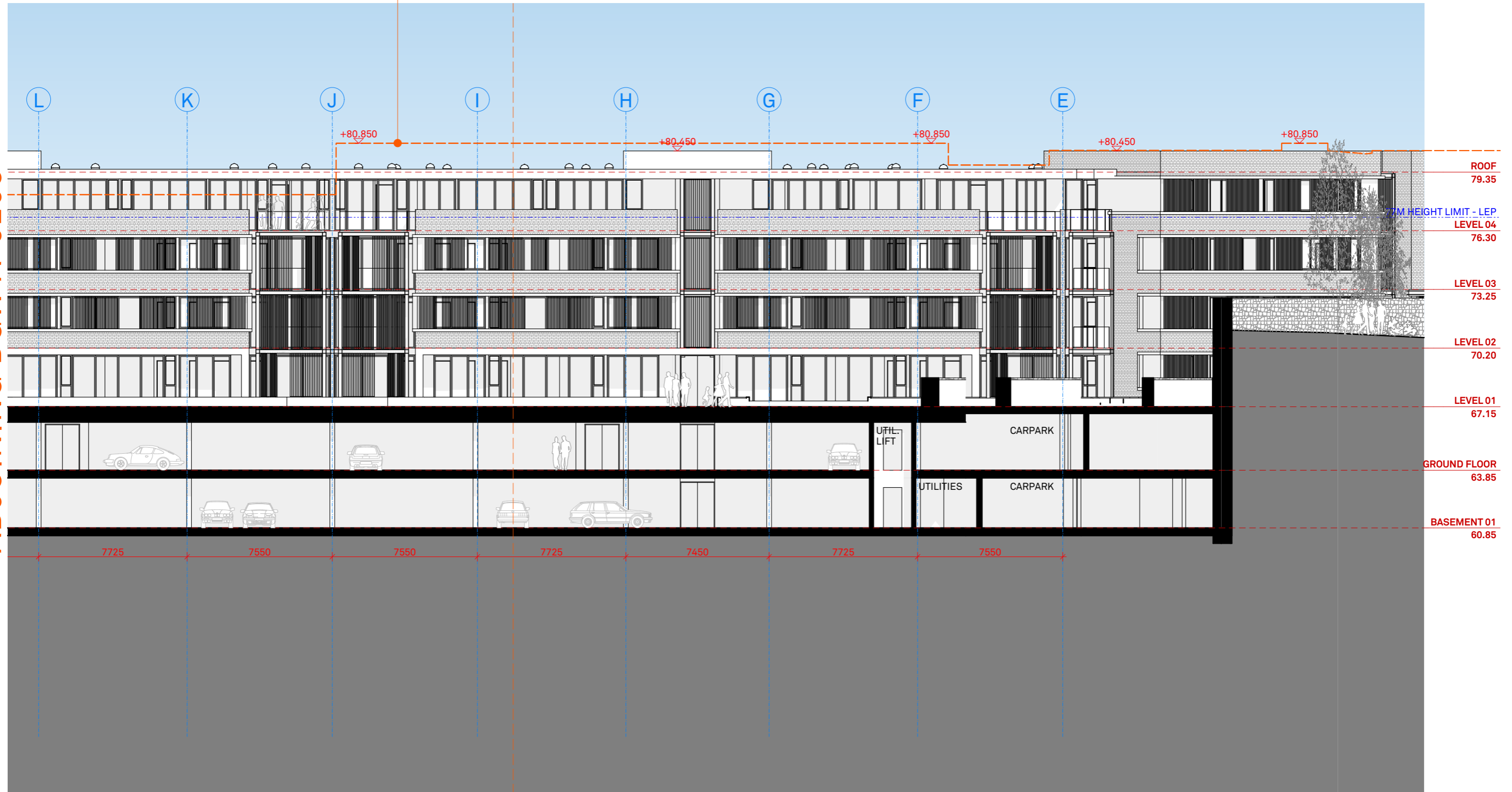
ISSUE
 A

ARCHITECT
 P : + 61 2 9818 0777
 F : + 61 2 9818 0778
 STUDIO 5, 505 BALMAIN RD
 LILYFIELD NSW 2040
 ABN: 76 129 130 285 RN: 7536



OUTLINE OF APPROVED DA

ADJOINING DGW A-0208



— — — — — OUTLINE APPROVED DA
 - - - - - OUTLINE PROPOSAL

MARQUE

NOTES
 This drawing is issued upon the condition it is not copied, reproduced, retained or disclosed to any unauthorised person either wholly or in part without prior consent in writing of Benson McCormack Architects.
 DO NOT SCALE DRAWINGS.

REV	DATE	ISSUE
A	MAR 18	S4.55(2) ISSUE 01

CLIENT
 Emirates Holdings Australia Pty Ltd
 54-58 Stoney Creek Road
 Bextley NSW 2207

PROJECT DETAILS
 70 JOHN WHITEWAY DR.
 70 WHITEWAY DRIVE
 GOSFORD NSW 2250



SCALE
 1:200 @ A3

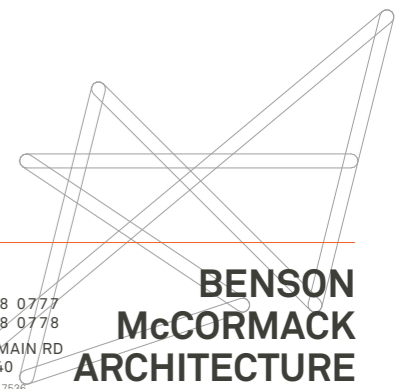
PROJECT NO.
 1767A

DRAWING NO.
 A-0209

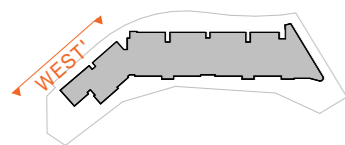
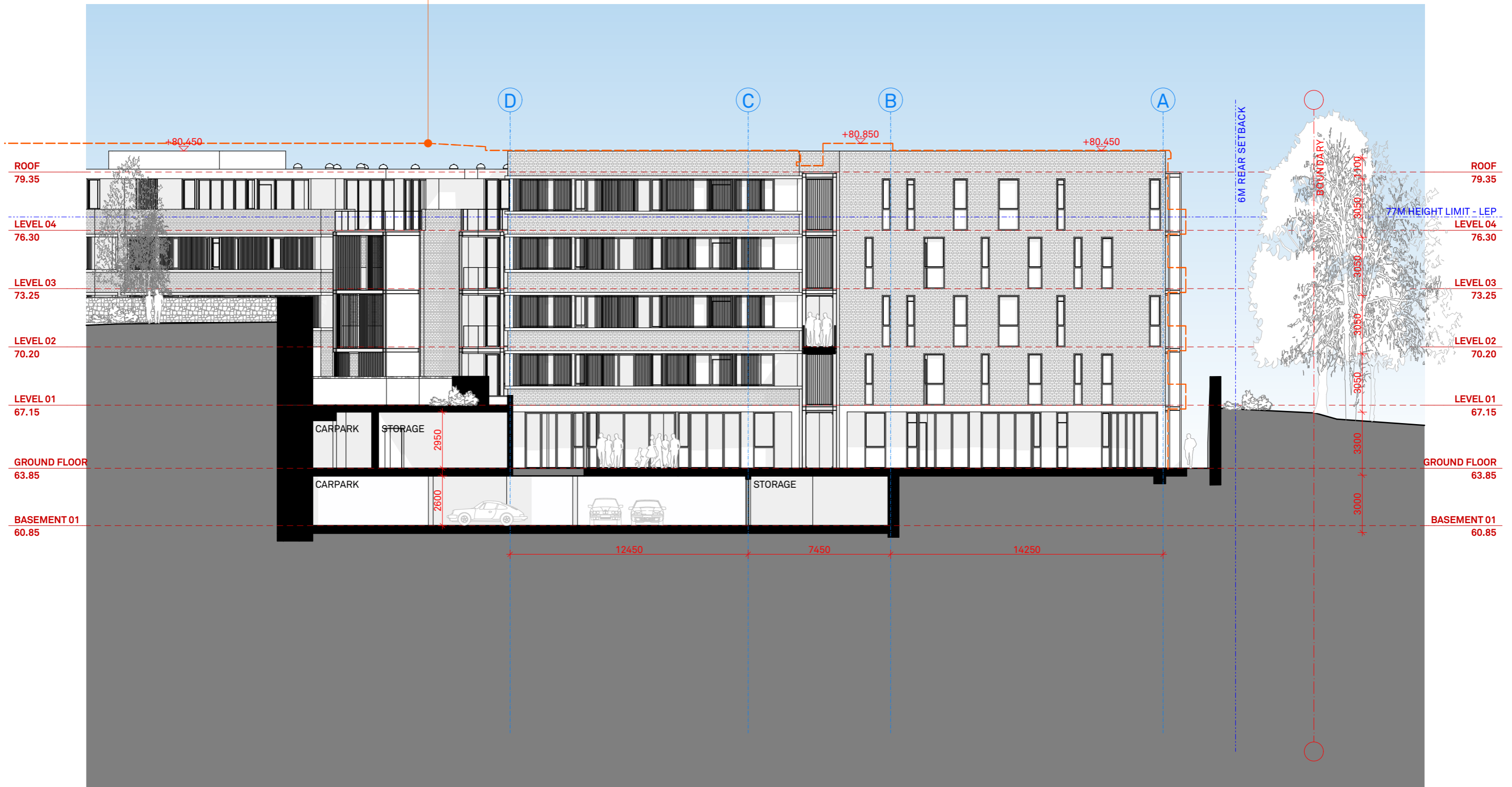
DRAWING
 ELEVATION WEST 2/2

ISSUE
 A

ARCHITECT
 P : + 61 2 9818 0777
 F : + 61 2 9818 0778
 STUDIO 5, 505 BALMAIN RD
 LILYFIELD NSW 2040
 ABN: 76 129 130 285 RN: 7536



OUTLINE OF APPROVED DA



— — — — — OUTLINE APPROVED DA
 — — — — — OUTLINE PROPOSAL

MARQUE

NOTES
 This drawing is issued upon the condition it is not copied, reproduced, retained or disclosed to any unauthorised person either wholly or in part without prior consent in writing of Benson McCormack Architects.
 DO NOT SCALE DRAWINGS.

REV	DATE	ISSUE
A	MAR 18	S4.55(2) ISSUE 01

CLIENT
 Emirates Holdings Australia Pty Ltd
 54-58 Stoney Creek Road
 Bextley NSW 2207

PROJECT DETAILS
 70 JOHN WHITEWAY DR.
 70 WHITEWAY DRIVE
 GOSFORD NSW 2250



SCALE
 1:200 @ A3

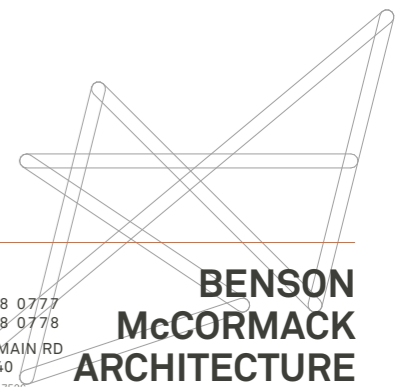
PROJECT NO.
 1767A

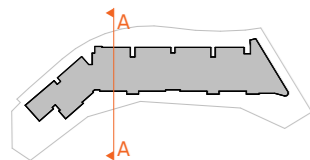
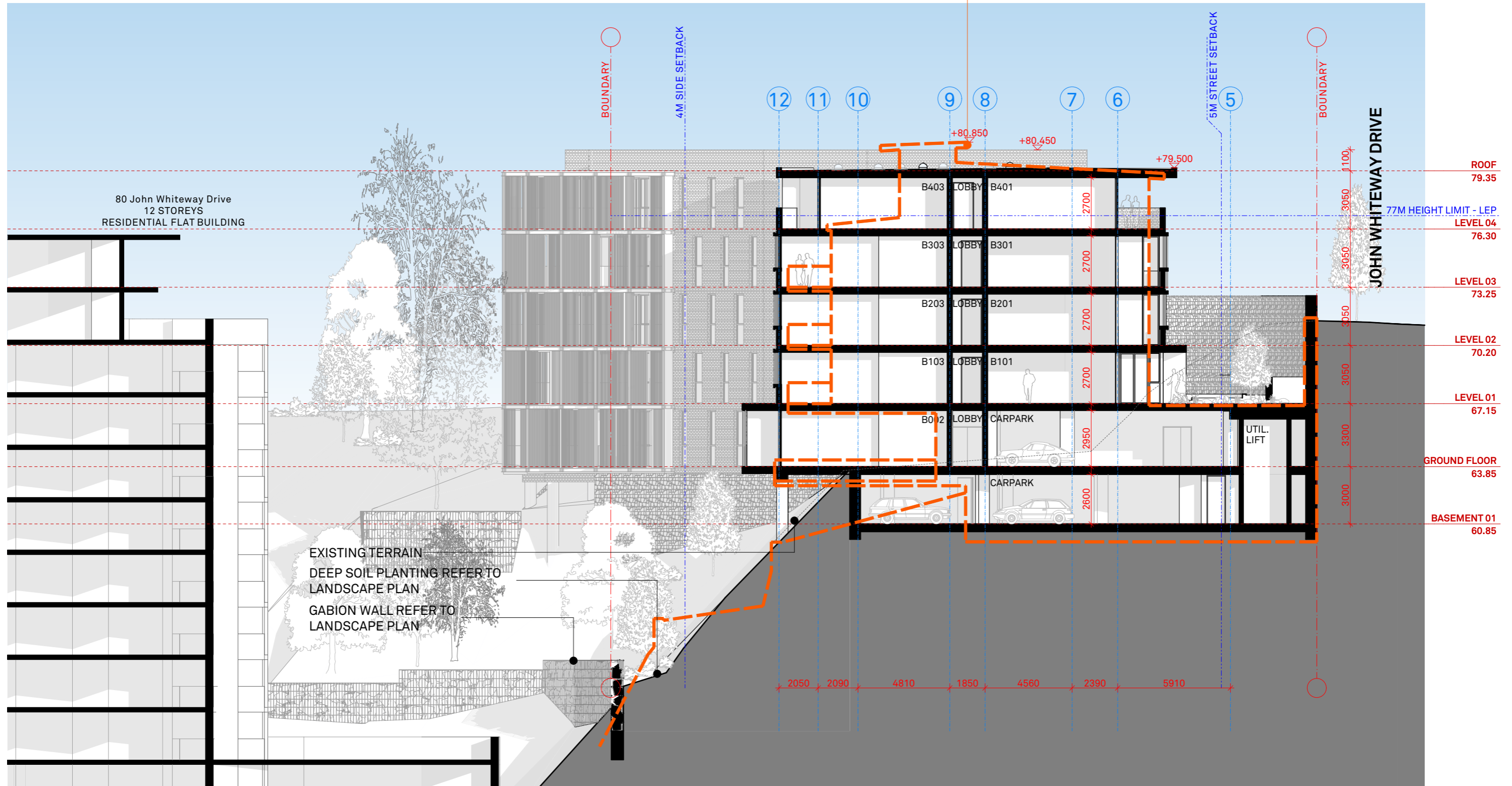
DRAWING NO.
 A-0210

DRAWING
 ELEVATION WEST'

ISSUE
 A

ARCHITECT
 P : + 61 2 9818 0777
 F : + 61 2 9818 0778
 STUDIO 5, 505 BALMAIN RD
 LILYFIELD NSW 2040
 ABN: 76 129 130 285 RN: 7536





— — — — — OUTLINE APPROVED DA
 — — — — — OUTLINE PROPOSAL

MARQUE

NOTES
 This drawing is issued upon the condition it is not copied, reproduced, retained or disclosed to any unauthorised person either wholly or in part without prior consent in writing of Benson McCormack Architects.
DO NOT SCALE DRAWINGS.

REV	DATE	ISSUE
A	MAR 18	S4.55(2) ISSUE 01

CLIENT
 Emirates Holdings Australia Pty Ltd
 54-58 Stoney Creek Road
 Bextley NSW 2207

PROJECT DETAILS
 70 JOHN WHITEWAY DR.
 70 WHITEWAY DRIVE
 GOSFORD NSW 2250

PROJECT NORTH

SCALE
 1:200 @ A3

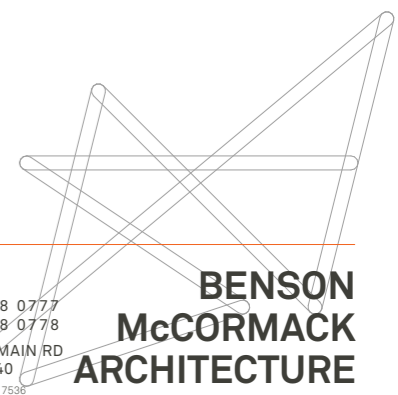
PROJECT NO.
 1767A

DRAWING NO.
 A-0221

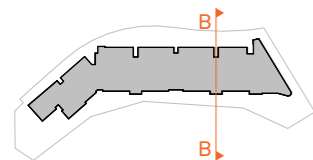
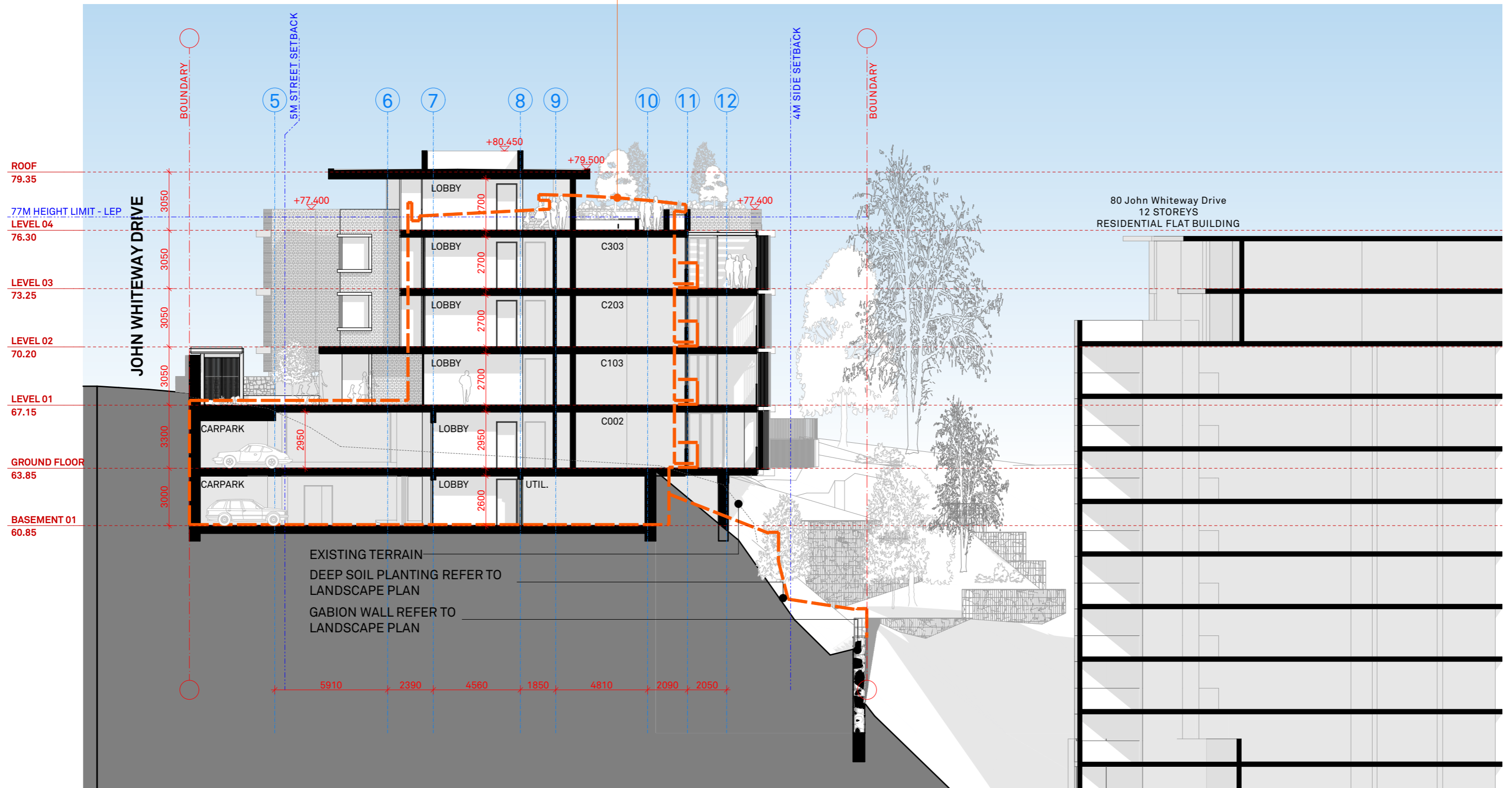
DRAWING
 SECTION AA

ISSUE
 A

ARCHITECT
 P : + 61 2 9818 0777
 F : + 61 2 9818 0778
 STUDIO 5, 505 BALMAIN RD
 LILYFIELD NSW 2040
 ABN: 76 129 130 285 RN: 7536



OUTLINE OF APPROVED DA



— — — — — OUTLINE APPROVED DA
— — — — — OUTLINE PROPOSAL

MARQUE

NOTES
This drawing is issued upon the condition it is not copied, reproduced, retained or disclosed to any unauthorised person either wholly or in part without prior consent in writing of Benson McCormack Architects.
DO NOT SCALE DRAWINGS.

REV	DATE	ISSUE
A	MAR 18	S4.55(2) ISSUE 01

CLIENT
Emirates Holdings Australia Pty Ltd
54-58 Stoney Creek Road
Bextley NSW 2207

PROJECT DETAILS
70 JOHN WHITEWAY DR.
70 WHITEWAY DRIVE
GOSFORD NSW 2250



SCALE
1:200 @ A3

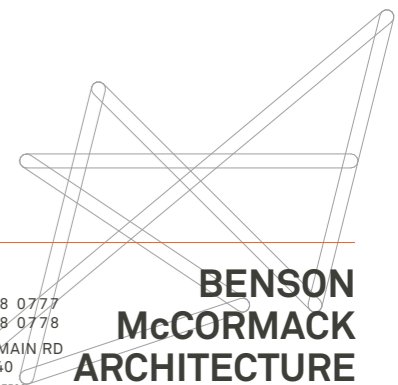
PROJECT NO.
1767A

DRAWING NO.
A-0222

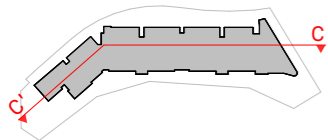
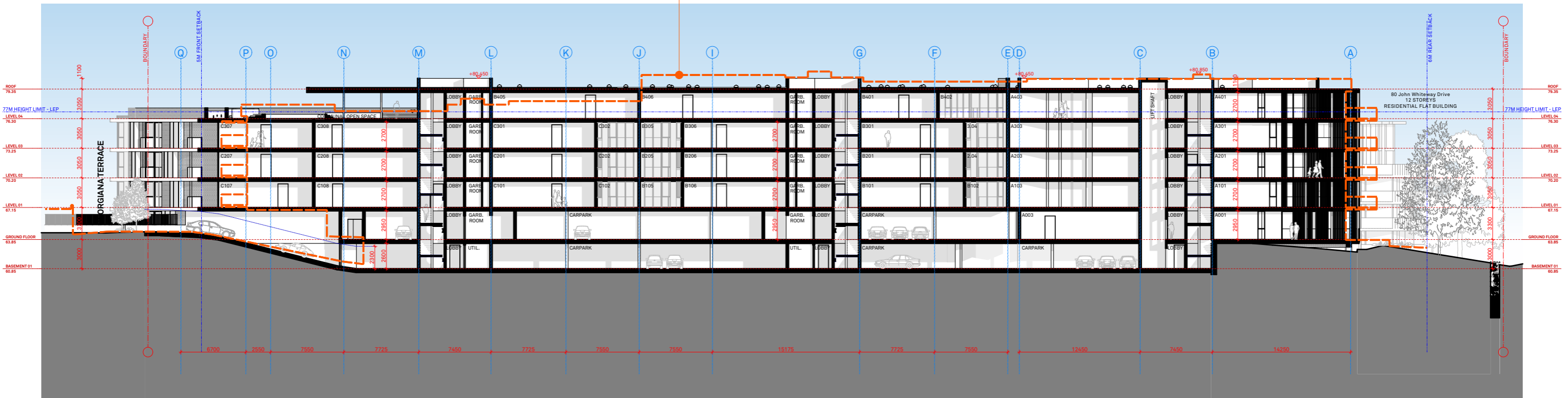
DRAWING
SECTION BB

ISSUE
A

ARCHITECT
P : + 61 2 9818 0777
F : + 61 2 9818 0778
STUDIO 5, 505 BALMAIN RD
LILYFIELD NSW 2040
ABN: 76 129 130 285 RN: 7536



OUTLINE OF APPROVED DA



— — — — — OUTLINE APPROVED DA
 — — — — — OUTLINE PROPOSAL

MARQUE

NOTES
 This drawing is issued upon the condition it is not copied, reproduced, retained or disclosed to any unauthorised person either wholly or in part without prior consent in writing of Benson McCormack Architects.
DO NOT SCALE DRAWINGS.

REV	DATE	ISSUE
A	MAR 18	S4.55(2) ISSUE 01

CLIENT
 Emirates Holdings Australia Pty Ltd
 54-58 Stony Creek Road
 Bextley NSW 2207

PROJECT DETAILS
 70 JOHN WHITEWAY DR.
 70 WHITEWAY DRIVE
 GOSFORD NSW 2250



SCALE
 1:400 @ A3

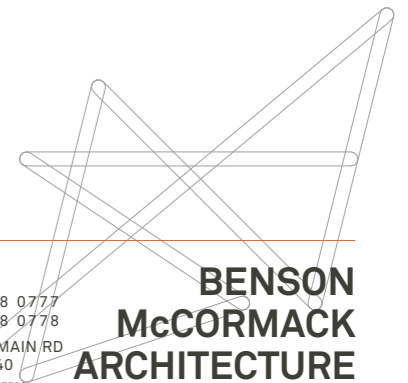
PROJECT NO.
 1767A

DRAWING NO.
 A-0223

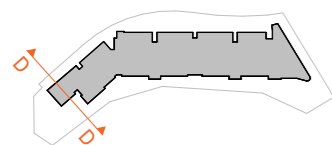
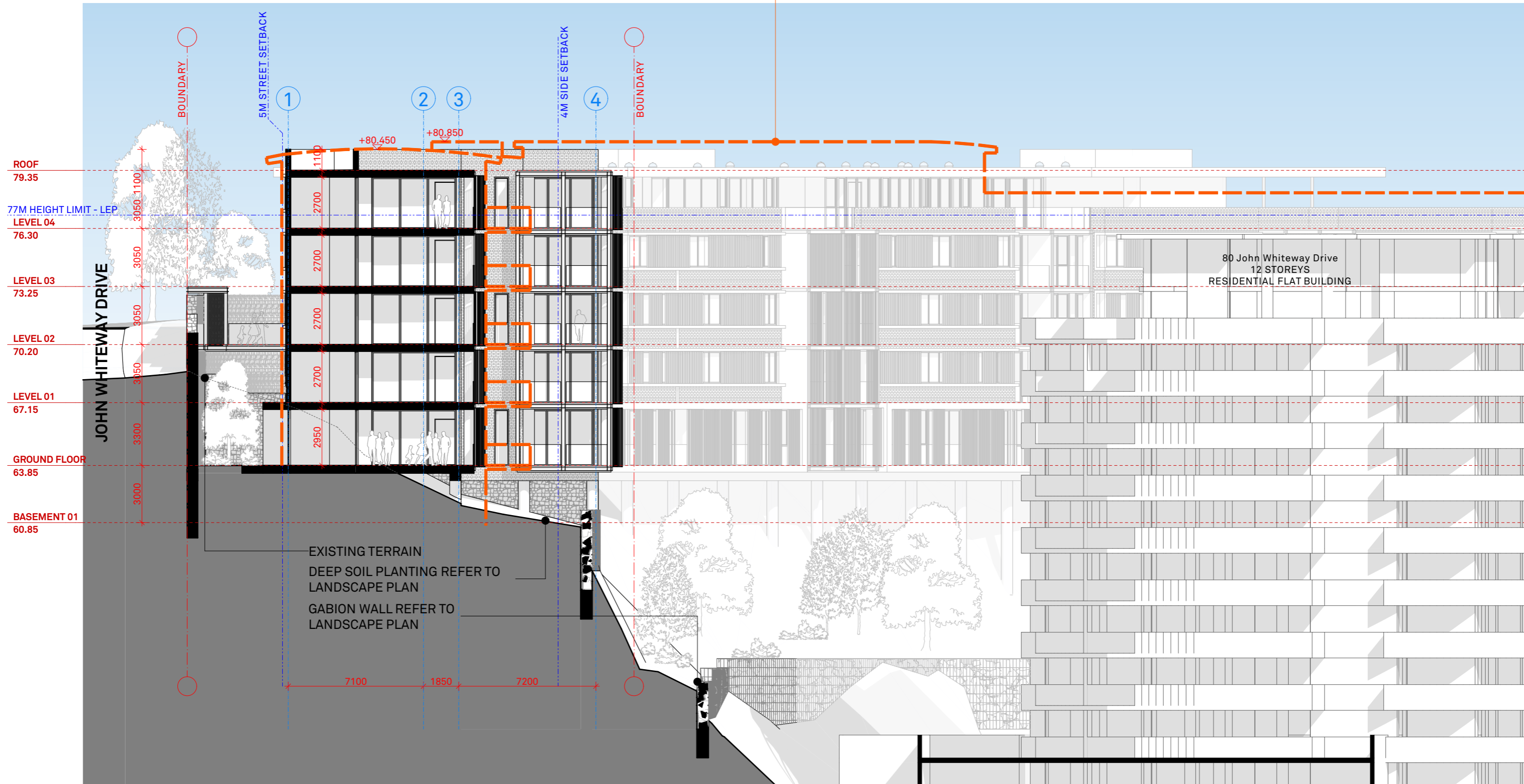
DRAWING
 SECTION CC'

ISSUE
 A

ARCHITECT
 P : + 61 2 9818 0777
 F : + 61 2 9818 0778
 STUDIO 5, 505 BALMAIN RD
 LILYFIELD NSW 2040
 ABN: 76 129 130 285 RN: 7536



OUTLINE OF APPROVED DA



— — — — — OUTLINE APPROVED DA
 — — — — — OUTLINE PROPOSAL

MARQUE

NOTES
 This drawing is issued upon the condition it is not copied, reproduced, retained or disclosed to any unauthorised person either wholly or in part without prior consent in writing of Benson McCormack Architects.
 DO NOT SCALE DRAWINGS.

REV	DATE	ISSUE
A	MAR 18	S4.55(2) ISSUE 01

CLIENT
 Emirates Holdings Australia Pty Ltd
 54-58 Stoney Creek Road
 Bextley NSW 2207

PROJECT DETAILS
 70 JOHN WHITEWAY DR.
 70 WHITEWAY DRIVE
 GOSFORD NSW 2250

PROJECT NORTH

SCALE
 1:200 @ A3

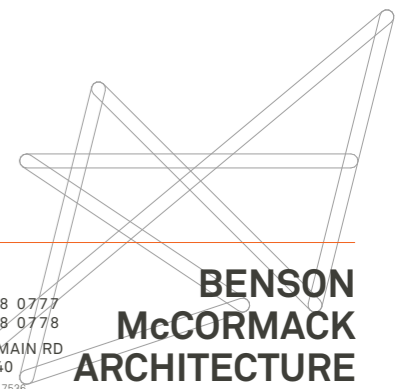
PROJECT NO.
 1767A

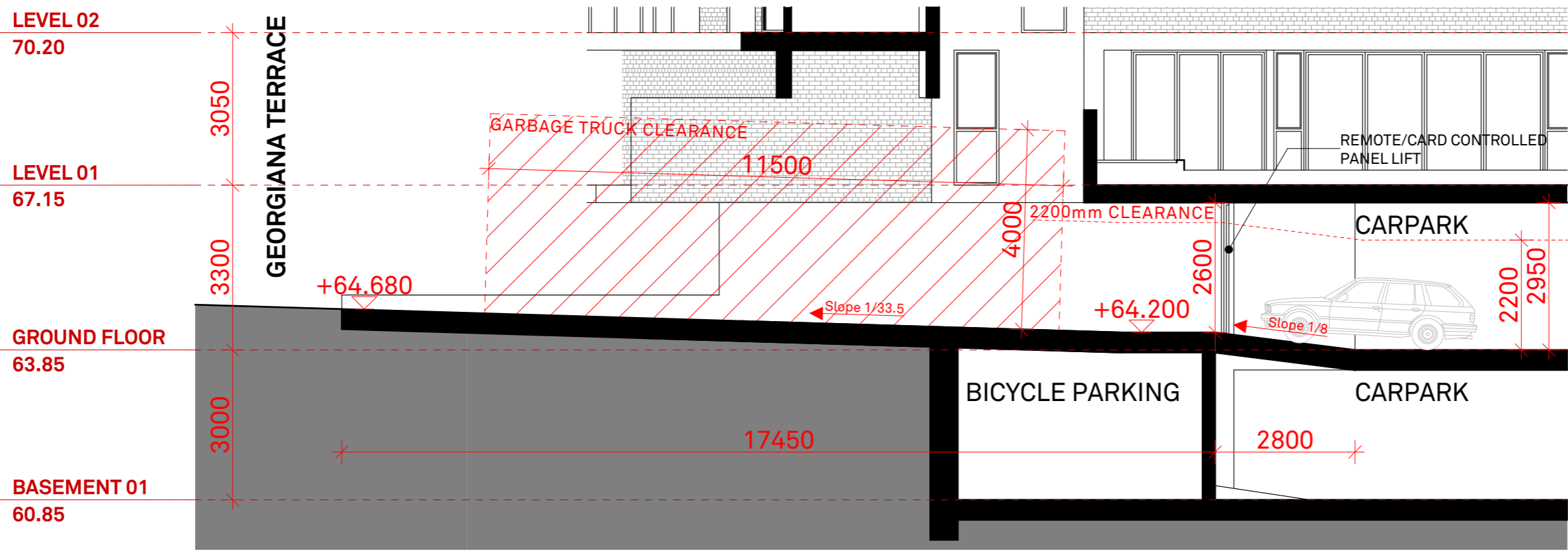
DRAWING NO.
 A-0224

DRAWING
 SECTION DD

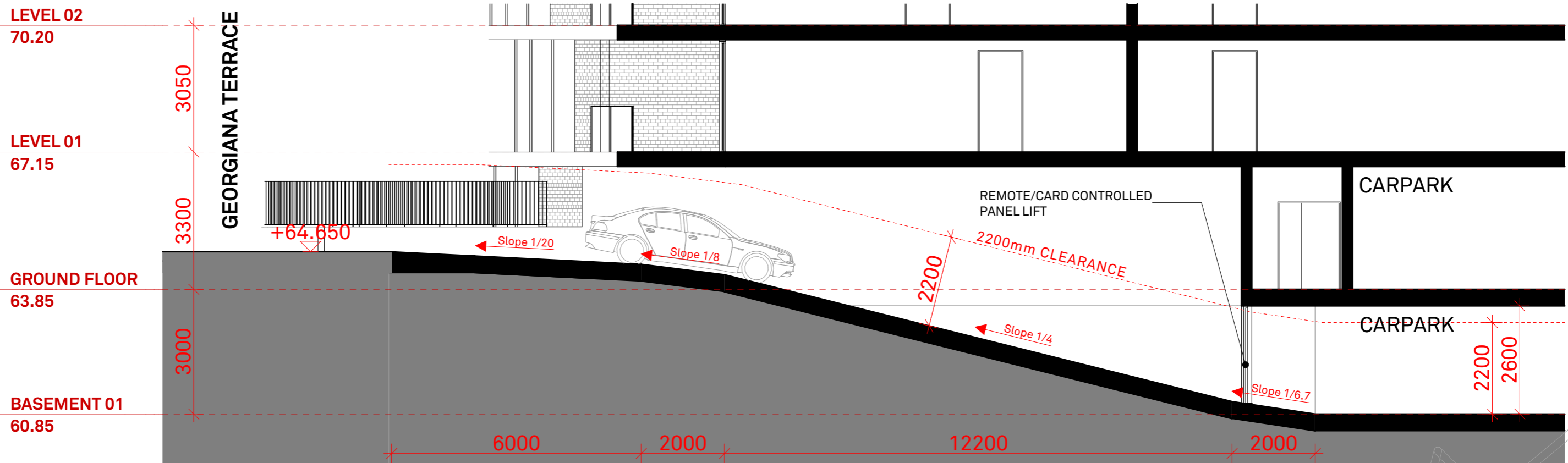
ISSUE
 A

ARCHITECT
 P : + 61 2 9818 0777
 F : + 61 2 9818 0778
 STUDIO 5, 505 BALMAIN RD
 LILYFIELD NSW 2040
 ABN: 76 129 130 285 RN: 7536





SECTION EE - ACCES RAMP GROUND FLOOR CARPARK



SECTION FF - ACCES RAMP BASEMENT CARPARK

MARQUE

NOTES
 This drawing is issued upon the condition it is not copied, reproduced, retained or disclosed to any unauthorised person either wholly or in part without prior consent in writing of Benson McCormack Architects.
 DO NOT SCALE DRAWINGS.

REV	DATE	ISSUE
A	MAR 18	S4.55(2) ISSUE 01

CLIENT
 Emirates Holdings Australia Pty Ltd
 54-58 Stoney Creek Road
 Bextley NSW 2207

PROJECT DETAILS
 70 JOHN WHITEWAY DR.
 70 WHITEWAY DRIVE
 GOSFORD NSW 2250

PROJECT NORTH

SCALE
 1:100 @ A3

PROJECT NO.
 1767A

DRAWING NO.
 A-0225

DRAWING
 SECTIONS EE / FF - ACCESS RAMP

ISSUE
 A

ARCHITECT
 P : + 61 2 9818 0777
 F : + 61 2 9818 0778
 STUDIO 5, 505 BALMAIN RD
 LILYFIELD NSW 2040
 ABN: 76 129 130 285 RN: 7536

BENSON McCORMACK ARCHITECTURE

DOOR SCHEDULE																	
ID	D-01	D-02	D-03	D-04	D-05	D-06	D-07	D-08	D-09	D-10	D-11	D-12	D-13	D-14	D-15	D-16	D-17
Nominal W x H Size	900x2700	1800x2700	1800x2950	1500x2700	1550x2700	1550x2700	1700x2700	1800x2700	1800x2950	1900x2950	1950x2700	2200x2700	2500x2700	2500x2950	2550x2700	2550x2950	2700x2700
Plan View																	
Elevation View																	
Notes	CLEAR GLAZING, POWDER COATED ALUMINIUM	CLEAR GLAZING, POWDER COATED ALUMINIUM	CLEAR GLAZING, POWDER COATED ALUMINIUM	CLEAR GLAZING, POWDER COATED ALUMINIUM	CLEAR GLAZING, POWDER COATED ALUMINIUM	CLEAR GLAZING, POWDER COATED ALUMINIUM	CLEAR GLAZING, POWDER COATED ALUMINIUM	CLEAR GLAZING, POWDER COATED ALUMINIUM	CLEAR GLAZING, POWDER COATED ALUMINIUM	CLEAR GLAZING, POWDER COATED ALUMINIUM	CLEAR GLAZING, POWDER COATED ALUMINIUM	CLEAR GLAZING, POWDER COATED ALUMINIUM	CLEAR GLAZING, POWDER COATED ALUMINIUM	CLEAR GLAZING, POWDER COATED ALUMINIUM	CLEAR GLAZING, POWDER COATED ALUMINIUM	CLEAR GLAZING, POWDER COATED ALUMINIUM	CLEAR GLAZING, POWDER COATED ALUMINIUM
Quantity	26	3	1	1	16	16	1	21	3	8	1	4	6	2	12	4	14

ID	D-18	D-19	D-20	D-21	D-22	D-23	D-24	D-25	D-26	D-27	D-28	D-29	D-30	D-31	D-32	D-33	D-34
Nominal W x H Size	2700x2950	2750x2700	2800x2700	3000x2700	3400x2700	3450x2700	3500x2700	3500x2950	3600x2700	3600x2950	3700x2700	3700x2950	3875x2700	4100x2950	4200x2700	4300x2950	4450x2700
Plan View																	
Elevation View																	
Notes	CLEAR GLAZING, POWDER COATED ALUMINIUM	CLEAR GLAZING, POWDER COATED ALUMINIUM	CLEAR GLAZING, POWDER COATED ALUMINIUM	CLEAR GLAZING, POWDER COATED ALUMINIUM	CLEAR GLAZING, POWDER COATED ALUMINIUM	CLEAR GLAZING, POWDER COATED ALUMINIUM	CLEAR GLAZING, POWDER COATED ALUMINIUM	CLEAR GLAZING, POWDER COATED ALUMINIUM	CLEAR GLAZING, POWDER COATED ALUMINIUM	CLEAR GLAZING, POWDER COATED ALUMINIUM	CLEAR GLAZING, POWDER COATED ALUMINIUM	CLEAR GLAZING, POWDER COATED ALUMINIUM	CLEAR GLAZING, POWDER COATED ALUMINIUM	CLEAR GLAZING, POWDER COATED ALUMINIUM	CLEAR GLAZING, POWDER COATED ALUMINIUM	CLEAR GLAZING, POWDER COATED ALUMINIUM	CLEAR GLAZING, POWDER COATED ALUMINIUM
Quantity	11	1	1	1	4	3	5	1	13	6	4	1	2	1	12	4	4

ID	D-35	D-36	D-37	D-38
Nominal W x H Size	4450x2950	4825x2700	5475x2700	5825x2700
Plan View				
Elevation View				
Notes	CLEAR GLAZING, POWDER COATED ALUMINIUM	CLEAR GLAZING, POWDER COATED ALUMINIUM	CLEAR GLAZING, POWDER COATED ALUMINIUM	CLEAR GLAZING, POWDER COATED ALUMINIUM
Quantity	1	12	1	1

MARQUE

NOTES
This drawing is issued upon the condition it is not copied, reproduced, retained or disclosed to any unauthorised person either wholly or in part without prior consent in writing of Benson McCormack Architects.
DO NOT SCALE DRAWINGS.

REV | **DATE** | **ISSUE**
A | MAR 18 | S4.55(2) ISSUE 01

CLIENT
Emirates Holdings Australia Pty Ltd
54-58 Stoney Creek Road
Bextley NSW 2207

PROJECT DETAILS
70 JOHN WHITEWAY DR.
70 WHITEWAY DRIVE
GOSFORD NSW 2250

PROJECT NORTH

SCALE
@ A3

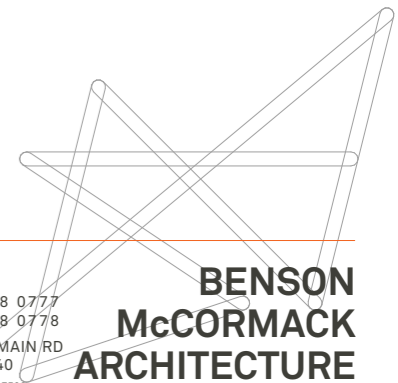
PROJECT NO.
1767A

DRAWING NO.
A-1101

DRAWING
DOOR SCHEDULE

ISSUE
A

ARCHITECT
P : + 61 2 9818 0777
F : + 61 2 9818 0778
STUDIO 5, 505 BALMAIN RD
LILYFIELD NSW 2040
ABN: 76 129 130 285 RN: 7536





FACADE SOUTH EAST



FACADE EAST



FACADE NORHT EAST



FACADE NORTH



FACADE WEST



FACADE WEST

MARQUE

NOTES

This drawing is issued upon the condition it is not copied, reproduced, retained or disclosed to any unauthorised person either wholly or in part without prior consent in writing of Benson McCormack Architects.

DO NOT SCALE DRAWINGS.

REV	DATE	ISSUE
A	MAR 18	S4.55(2) ISSUE 01

CLIENT

Emirates Holdings Australia Pty Ltd
54-58 Stoney Creek Road
Bextley NSW 2207

PROJECT DETAILS

70 JOHN WHITEWAY DR.
70 WHITEWAY DRIVE
GOSFORD NSW 2250

PROJECT NORTH



SCALE

1:2.22 @ A3

PROJECT NO.

1767A

DRAWING NO.

A-1301

DRAWING

MASSING STUDY 1/2

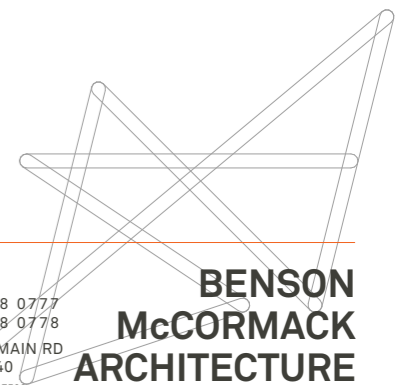
ISSUE

A

ARCHITECT

P : + 61 2 9818 0777
F : + 61 2 9818 0778
STUDIO 5, 505 BALMAIN RD
LILYFIELD NSW 2040

ABN: 76 129 130 285 RN: 7536

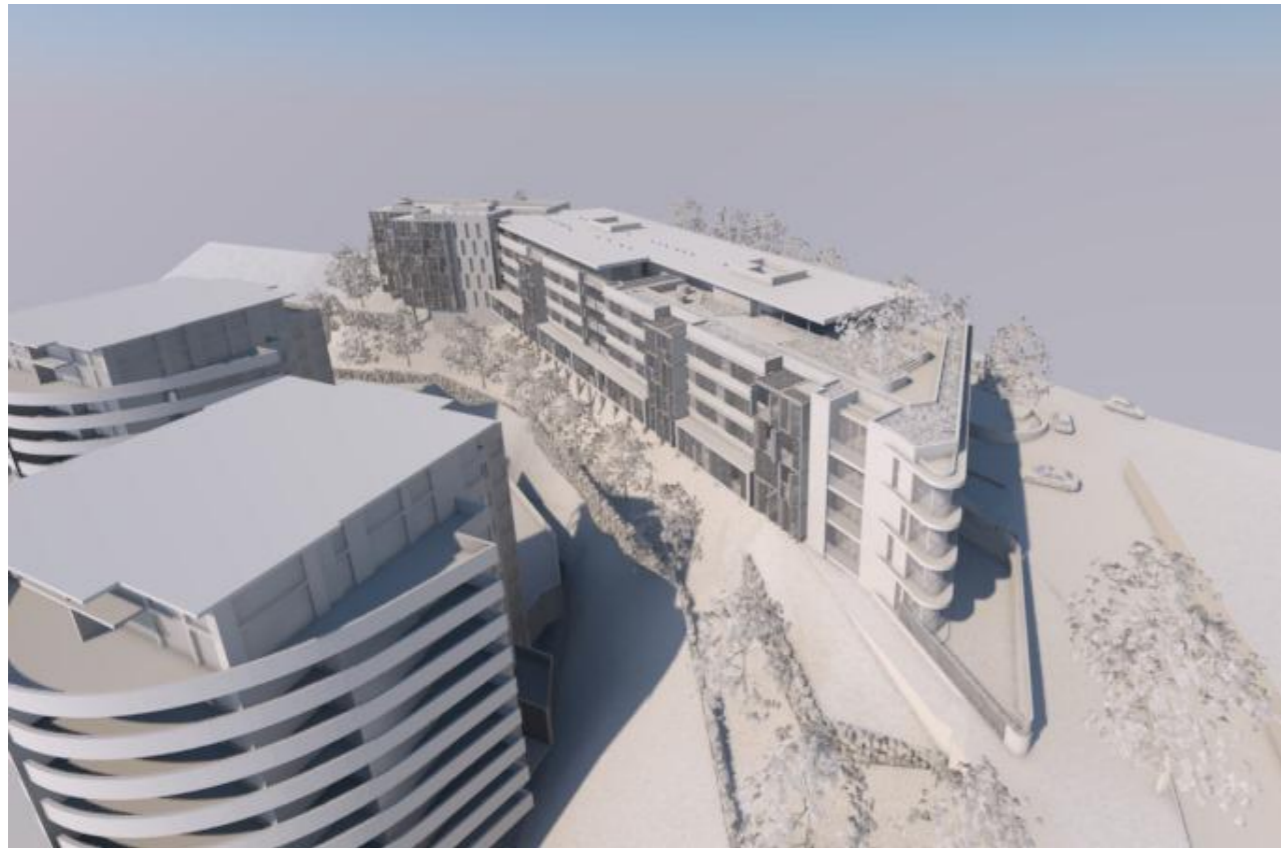




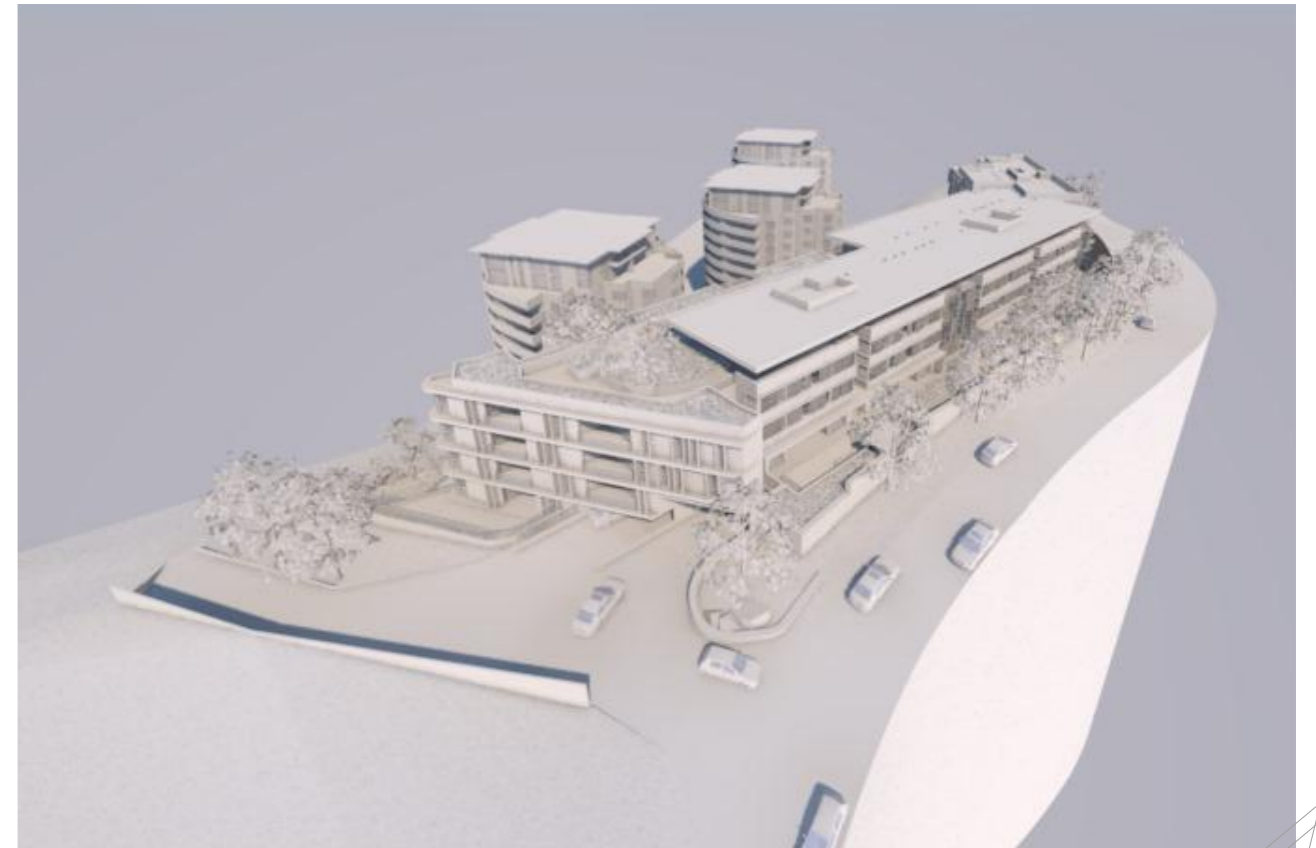
SOUTH EAST CORNER ON JOHN WHITEWAY DRIVE



SOUTH EAST CORNER TOWARD 80 JOHN WHITEWAY DRIVE



NORTH EAST CORNER ON GEORGIANA TERRACE



NORTH WEST CORNER ON JOHN WHITEWAY DRIVE

MARQUE

NOTES
 This drawing is issued upon the condition it is not copied, reproduced, retained or disclosed to any unauthorised person either wholly or in part without prior consent in writing of Benson McCormack Architects.
DO NOT SCALE DRAWINGS.

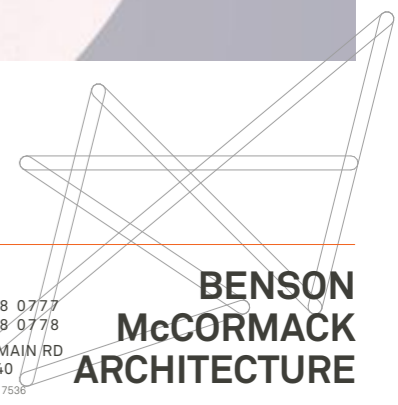
REV	DATE	ISSUE
A	MAR 18	S4.55(2) ISSUE 01

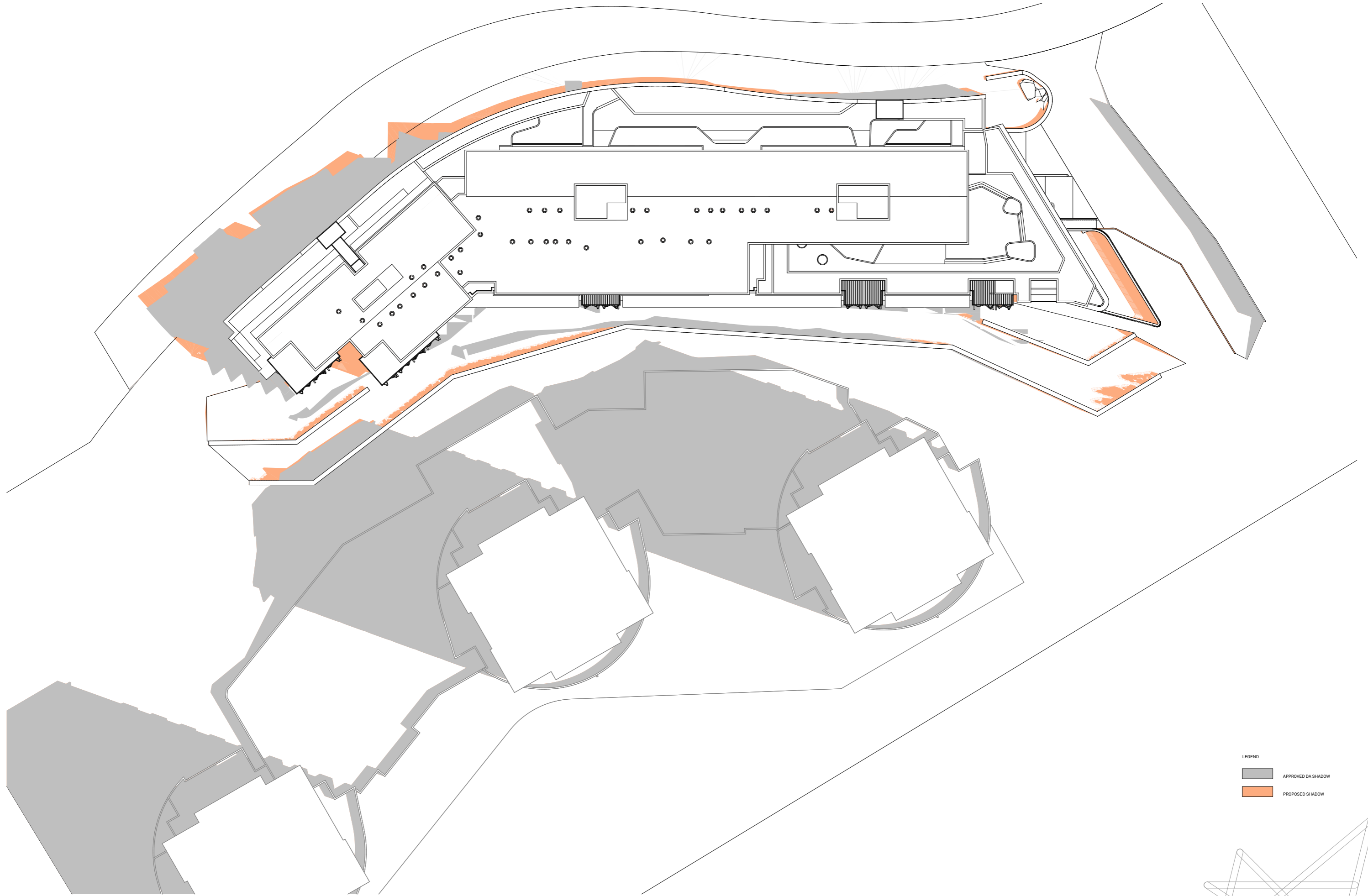
CLIENT	PROJECT DETAILS	PROJECT NORTH
Emirates Holdings Australia Pty Ltd 54-58 Stoney Creek Road Bextley NSW 2207	70 JOHN WHITEWAY DR. 70 WHITEWAY DRIVE GOSFORD NSW 2250	

SCALE	PROJECT NO.	DRAWING NO.	DRAWING
1:1.43 @ A3	1767A	A-1302	MASSING STUDY 2/2

ISSUE	ARCHITECT
A	P : + 61 2 9818 0777 F : + 61 2 9818 0778 STUDIO 5, 505 BALMAIN RD LILYFIELD NSW 2040 ABN: 76 129 130 285 RN: 7536

**BENSON
McCORMACK
ARCHITECTURE**





LEGEND
 [Grey Box] APPROVED DA SHADOW
 [Orange Box] PROPOSED SHADOW

MARQUE

NOTES
 This drawing is issued upon the condition it is not copied, reproduced, retained or disclosed to any unauthorised person either wholly or in part without prior consent in writing of Benson McCormack Architects.
DO NOT SCALE DRAWINGS.

REV	DATE	ISSUE
A	MAR 18	S4.55(2) ISSUE 01

CLIENT
 Emirates Holdings Australia Pty Ltd
 54-58 Stoney Creek Road
 Bextley NSW 2207

PROJECT DETAILS
 70 JOHN WHITEWAY DR.
 70 WHITEWAY DRIVE
 GOSFORD NSW 2250

PROJECT NORTH

SCALE
 1:500 @ A3

PROJECT NO.
 1767A

DRAWING NO.
 A-1303

DRAWING
 SHADOW ANALYSIS - PLAN
 MARCH 21/0900

ISSUE
 A

ARCHITECT
 P : + 61 2 9818 0777
 F : + 61 2 9818 0778
 STUDIO 5, 505 BALMAIN RD
 LILYFIELD NSW 2040
 ABN: 76 129 130 285 RN: 7536

